

15 Joining countries for joint HIV solutions



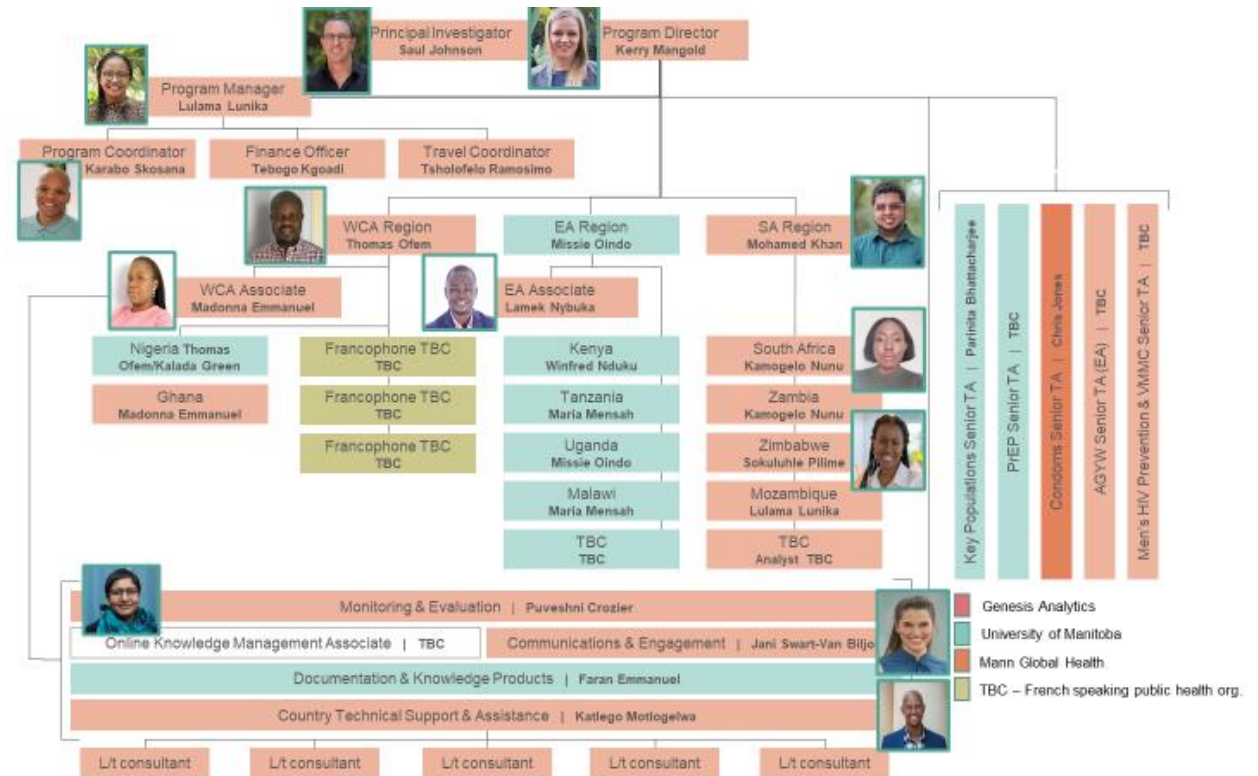
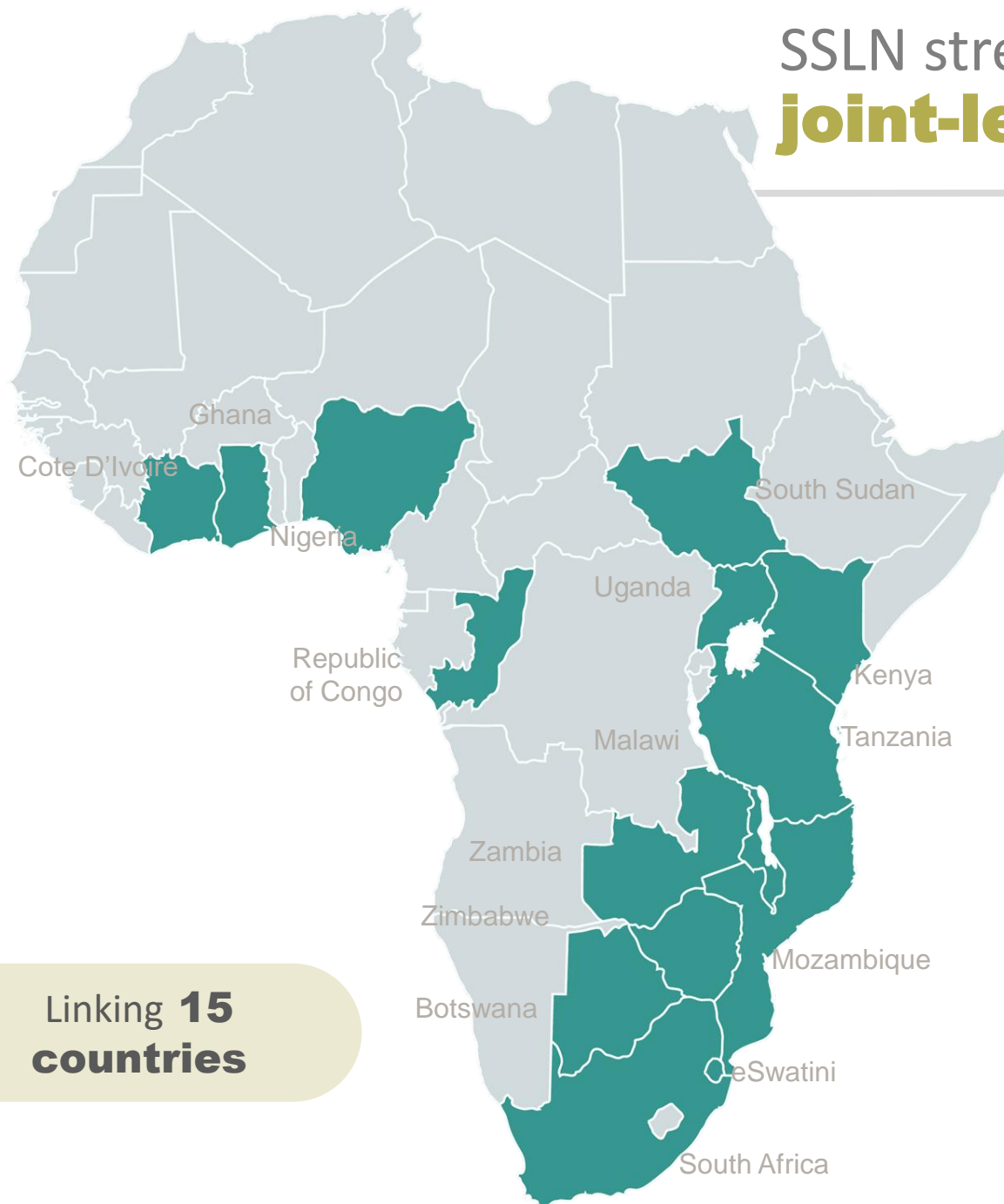
SOUTH *TO* SOUTH
LEARNING NETWORK
The HIV Prevention Interchange

Value Unlocked 2022

Joint Solutions category

SSLN strengthens HIV prevention by **joint-learning & networking**

facilitating



Uganda's Medical Assisted Therapy services for People Who Inject Drugs (PWID)

with [help] from Kenya

If it wasn't for the SSLN, we would be doing a lot of mistakes, wastage and inefficiencies.

...we have changed our course of action and now redesigned our PWID programme based on learning.

Define the right outcome
Linking countries & making a plan



Pick the right team
Cross-cutting team of movers & shakers



Jointly understand
Relevant & empowering mentoring workshops on building Uganda's MAT programme for PWID



Jointly ideate & filter



Test & learn
Next stop: Kenya



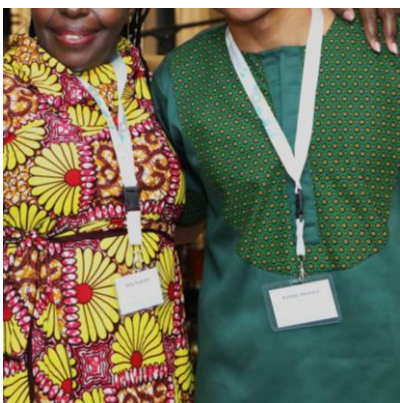
Scale & share a.k.a change lives!
Back in Uganda, it's time to implement



Dr Peter Mudioppe, Head of Prevention, Uganda Ministry of Health

Our impact

The SSLN team is spread across **4 regional hubs**, supports & champions networks in **15 countries** through activities in up to **5 languages** for **over 150 champions** from different stakeholder groups



Multisectoral stakeholder engagement & alignment at National, Regional, International levels



An array of different technical support activities to support HIV prevention teams as they need



Peer-to-peer capability & effectiveness strengthening through learning exchange activities



The successful implementation of SSLN Phase I, led to **BGMF** providing a **\$6.9 million follow-on grant** for Phase II.

Thanks for supporting HIV prevention!

The SSLN team

- Saul Johnson
- Kerry Mangold
- Lulama Lunika
- Karabo Skosana
- Tebogo Kgoadi
- Tsholofelo Ramosimo
- Thomas Ofem
- Mohamed Khan
- Lamek Nybuka
- Madonna Emmanuel
- Kamogelo Nunu
- Sukoluhle Piime
- Jani Swart-Van Biljon
- Puveshni Crozier
- Katlego Motlogelwa



**SOUTH *TO SOUTH*
LEARNING NETWORK**

The HIV Prevention Interchange